



Company profile



VCU Could handle all kinds of assembly works including
+ Steel Rack/Bike Rack/BBQ Rack/Steam Rack

+ Drain

+ Packaging

+ Webbing

+ LED

+ Amazon/Walmart



What we can do



We specialize in manufacturing high-quality assembly components tailored to your specifications.

With extensive experience serving Amazon sellers, distributors, and OEM clients across North America and Europe, we deliver:

- ✓ End-to-end solutions – From design support to precision assembly & packaging
- ✓ Multi-material expertise – Metal, plastic, and hybrid component fabrication
- ✓ Scalable production – Prototyping to bulk orders with consistent quality
- ✓ Compliance-ready – Meet international standards for safety and performance

Trusted by leading e-commerce and industrial partners.

Let's build your next product together.

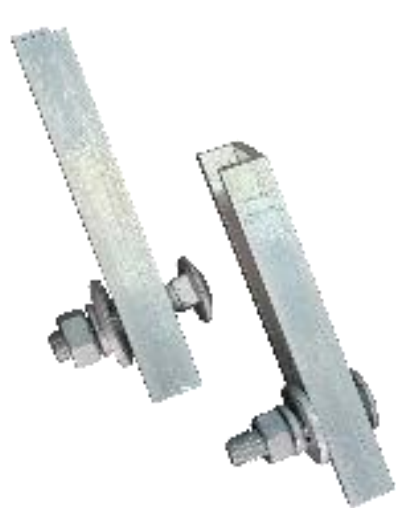
Quality

VCU have established an independent quality control department, full time quality control personnel, we strictly according to the ISO9001: 2015 quality system requirements.

VCU quality system ensures that all the purchased materials are all according to the national standard, and at the same time meets the requirements with customers. To take abnormal inspection and analysis of the products are made in advance, and the necessary improvement plan is put forward to ensure the quality of each processing.



Products Show



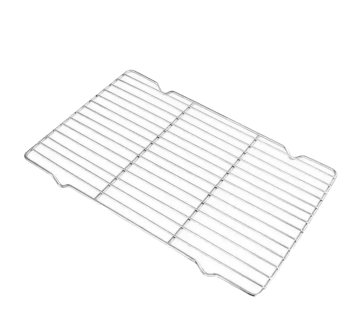
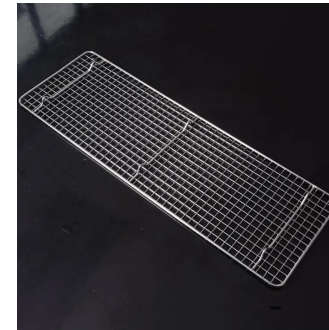
BIKE RACK



Products Show



Grill Steamer



Products Show



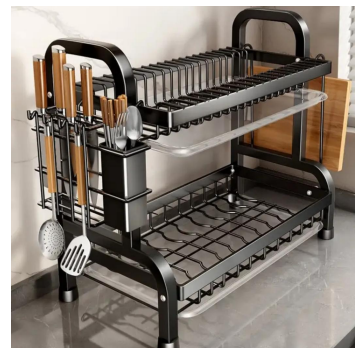
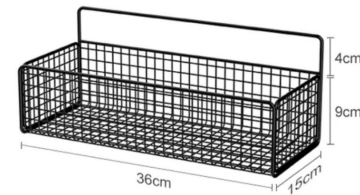
Drain Rack



Products Show



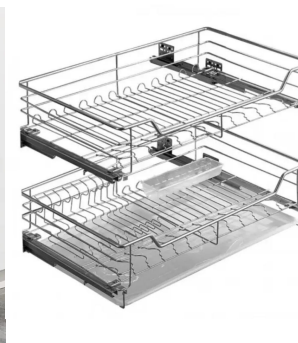
Drain Rack



Products Show



Drain Rack



Products Show



DRAIN



Products Show



DRAIN



Products Show



DRAIN



Products Show

DRAIN



Products Show



Drawn Sink
Monthly Capacity: 40,000 pcs
(480K pcs per year)



Weld in bowl
Monthly Capacity: 3,000 pcs
(36 K pcs per year)



Work Tables
Monthly Capacity: 30 containers
22,000 pcs (260K per year)



Hand Sink
Monthly Capacity: 12,000
pcs (140K pcs per year)



Mop Sink & Compartment Sink
Monthly Capacity: 5,000 pcs
(60 K pcs per year)



Handmade Sink
Monthly Capacity: 15,000 pcs
(180 K pcs per year)

Products Show



Commercial Kitchen

Products Show

Commercial Kitchen Hand Sinks



Products Show

Commercial Kitchen Ice Bins



Products Show

Commercial Kitchen Compartment Sinks



Products Show

Commercial Kitchen Mop Sinks



Products Show

Commercial Kitchen Work Tables



Products Show



Commercial Kitchen Kitchen Cabinet & Cupboard



Products Show

Commercial Kitchen Shelf & Trolley



Products Show

Commercial Kitchen Bar Cabinet



Products Show



Public Amenity

Products Show

Public Amenity Drinking Fountain



Products Show

Public Amenity Washing Basin



Products Show

Public Amenity Washing Trough & Toilet



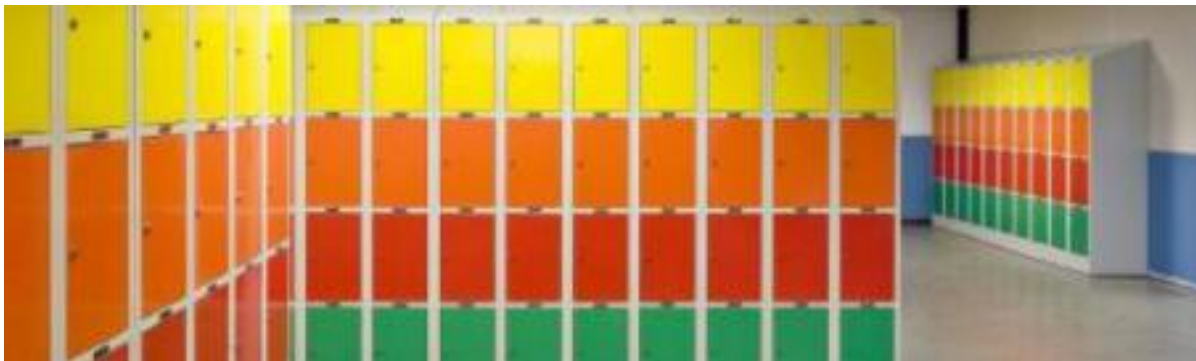
Products Show

Public Amenity Urinal



Products Show

Public Amenity Floor Drain & Locker



Products Show

Public Amenity

ADA toilet & grab bar



ADA sink



Products Show



Medical Equipment

Products Show

Medical Equipment Sluice Sink



Scrub Sink



Products Show

Medical Equipment Operating Room Sink



Operating Room Cabinet



Products Show

Medical Equipment Surgical Trolley



Step Over Bench



Products Show



Sink & Basin

Products Show

Sink & Basin Handmade Sink



Under mount



**Top mount
with faucet hole**



Low divide



With Workstation



Apron front



With drainboard



Slanted side

Products Show

Sink & Basin

Drawn/Pressed Sink



Single bowl



Double bowl



With drainboard



Corner sink



Triple bowl



Under mount



Top mount



R25
small radius



Bar sink &
RV sink



Round & oval



Special shaped



Slanted side

[View
More+](#)

Products Show

Sink & Basin

Bar Sink



Products Show

Sink & Basin Bathroom Basin



Products Show

Sink & Basin

PVD Color Sinks

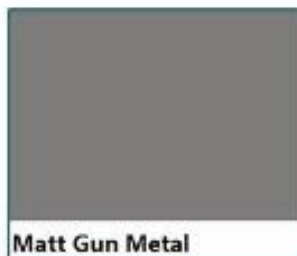
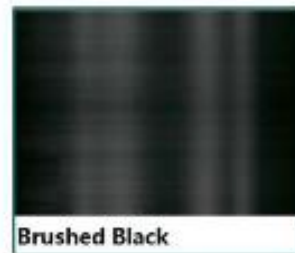


Hammer Sink



Products Show

Sink & Basin Optional Color



Products Show

Sink & Basin Laundry Sink



Assemble or KD



Clientele





THANK YOU!

Vietnam create for you !

