

# Company Profile



Occupation of Land: 150000m<sup>2</sup>

Staff numbers: 800

Production lines: 10

Production Capabilities: 2400T/Month

Heat treatment furnace: 3

Material: Aluninum

2 series, 6 series and 7 series are available for extrusion in our factory.

# Raw Material



## Aluminum Ingot

We import the ingots from Malaysia and Singapore

## Aluminum Billets

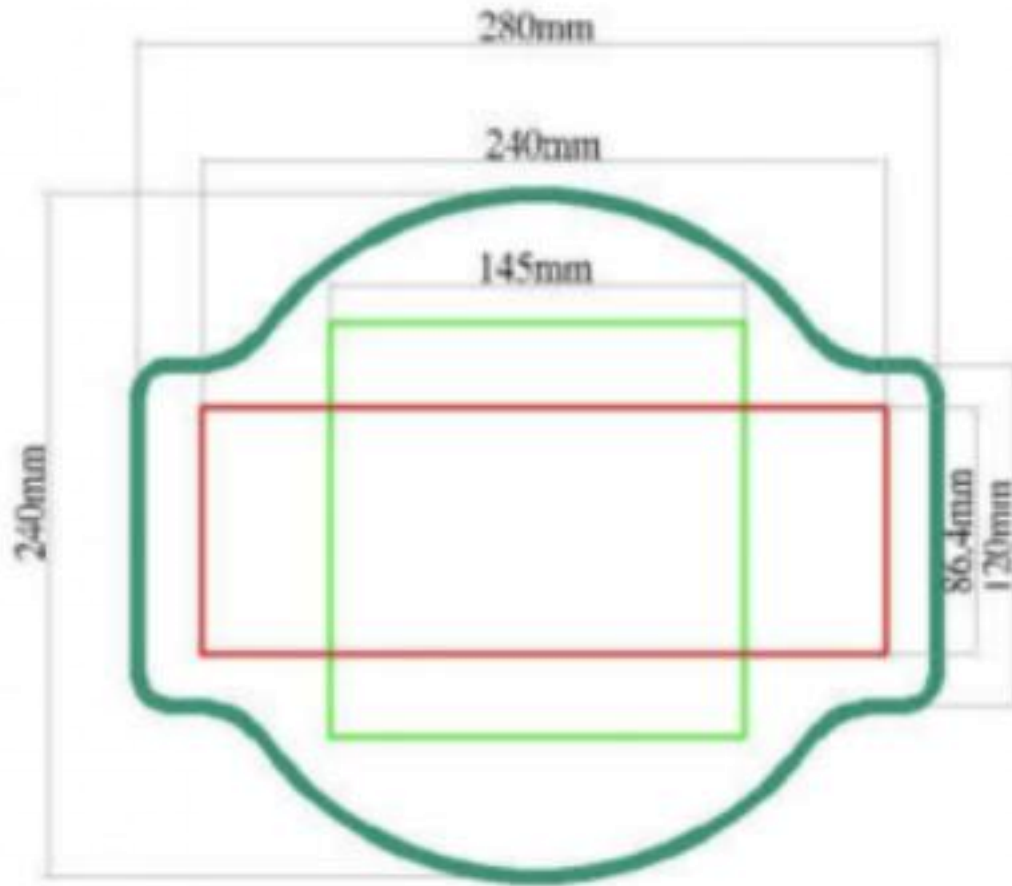
We have 2 sets of aluminum smelting furnaces in North of Vietnam where we smelt the billets in our factory.

# Extrusion Mold

The die we created is based on the drawing requests, metal flow design and our rich experience in aluminum extrusion skills. Meanwhile, we assembled the specialist technicians who to repair and maintain our die in our company.



# Profile Dimension



The maximum profile we can produce is:  
W280.0mm\*H240mm

The maximum square shape we can produce  
is: W145.0mm\*L145.0mm

The maximum rectangle shape we can  
produce is: W240.0mm\*H86.4mm



# Production Line



The existing extrusion machines we established:

- 3.5", 680 ton, 1 set
- 4.0", 700 ton, 4 sets
- 5.0", 1,000 ton, 3 sets
- 6.0", 1,450 ton, 1 set
- 7.0", 1,800 ton, 1 set

**Our existing production capacity is 2,400 tons per month**



## Production Lines (cont)



### Automatic double traction machine

Through intelligent digital control, the guide rail advances at a constant speed to ensure the linearity of the product and improve the product yield and production efficiency.

### Automatic extruder

The whole device adopts PLC type programming control system, fully automatic servo motor. Overall mechanical properties, hydraulic system, electrical control system can be excellently matched to produce high quality aluminum profiles.





# Heat Treatment



We are able to control the temper of products according to EN, ASTM, JIS and CNS standards.

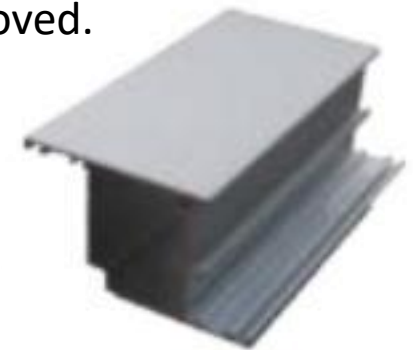
We have 3 sets of heat treatment furnaces with maximum length at 13 meters in our factory. They can help us to separate and reach different temper requirement easily. T5 and T6 are the most popular.



# Sandblasting machine



The fatigue resistance of the workpiece is improved, the adhesion between the coating and the coating is increased, the durability of the coating film is prolonged, the leveling and decoration of the coating is facilitated, and the impurities, variegated and oxide layers on the surface are removed. At the same time, the surface of the medium is roughened, the residual stress of the workpiece is eliminated, and the surface hardness of the substrate is improved.



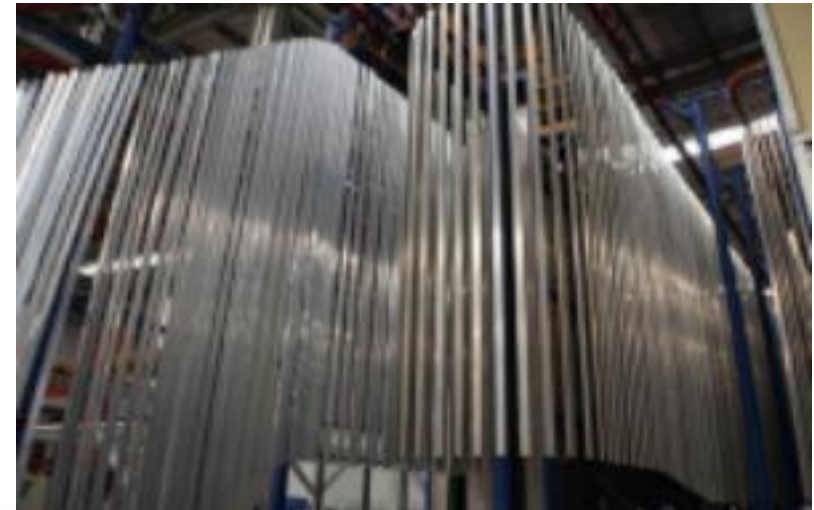


# Powder Coating

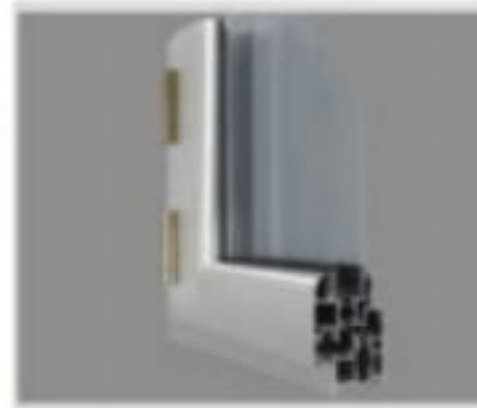
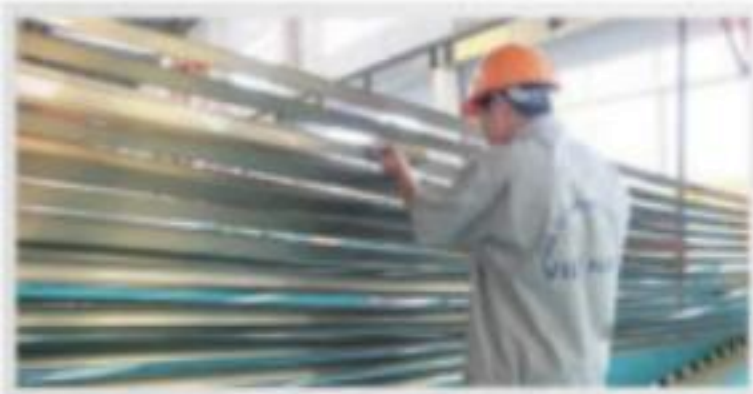
## Vertical electrostatic powder coating production line

All of the powder coatings presented in our color card and samples. We have been optimized to give the highest consistency of finish during the application process.

However, slight variations could appear depending on the actual application specification or application of the powder



# Anodizing





# Fabrication



Cutting to short lengths



Go-NoGo inspection



Stamping and punching



Cutting to different angles



[illegible][illegible]

## Conformity announcement

## Thirt party testing result

## Chemical compositions and mechanical properties

# Packing & Loading

In order to offer more service to our customers, we usually deliver the cargoes according to packing requests from each customer.



# Quality Assurance



Quality is the starting point for the value and dignity of our doing.  
Each processing step has quality inspection and also keep inspection record for each lot, each date.  
Time saving document is almost over three years.





# Quality Assurance



## Physical laboratory

Laser coding equipment, variety of calipers, micrometers, electronic scales and other tests.  
And coating testing equipments, microcomputer control electronic universal testing machine, paint film impactor and other test equipments.

# Products



Structure profiles, doors and windows, Industries, solid bars, and porthole tubes, and so on..

2 series, 6 series and 7 series are available for extrusion in our factory.



# Products



Precision Cutting

