

Company Profile



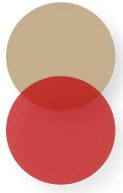
Our company occupies 2,000 square meters. We have strong technical strength and have introduced technology from Japan, the USA and other countries, and have advanced equipment such as production equipment, testing instruments and management mechanisms, fully automatic powder machines and high-temperature sintering furnaces. We have formed an industrial structure in multiple fields such as powder pressing, metal powder injection molding, and power tool gearboxes. We have cooperated with many Fortune 500 companies and have markets all over the world. Our employees have more than ten years of experience in the industry. They have been engaged in design, R&D and production management in companies such as Borade Japan, Urawa Japan, and Taiwan. They have more than 10 years of gear transmission design experience and professional gear design software. High-precision, high-quality products are guaranteed. Our company enjoys advantages in mold development and can integrate customers' advantages in saving mold costs. We also have a mold development and manufacturing factory with more than 40 sets of advanced processing and testing equipment. It has 10 years of experience in precision mold production, and can provide customers with Delivery date guaranteed. Our main products: iron-based, copper-based, stainless steel sintered parts, power tool gearboxes, etc. Supporting industries: automobiles, power tools, household appliances, garden tools and other applicable industries.

Features of the company's products: high-strength, high-precision gears and various special-shaped structural parts.

Our business philosophy: Integrity, innovation, and win-win!

Our business purpose: pursuit of excellence and continuous innovation.





Workshop

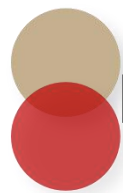


Raw material mixing/molding workshop



Sintering/High temperature sinteringsintering /steam blackening workshop





Precision Pressing/Machining Workshop

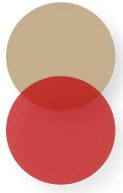




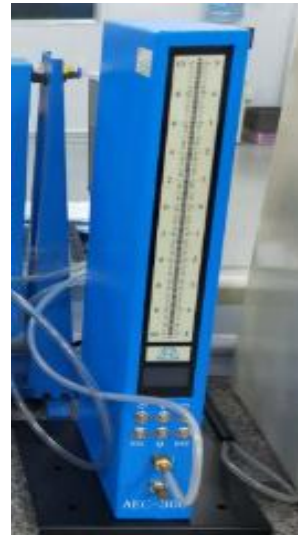
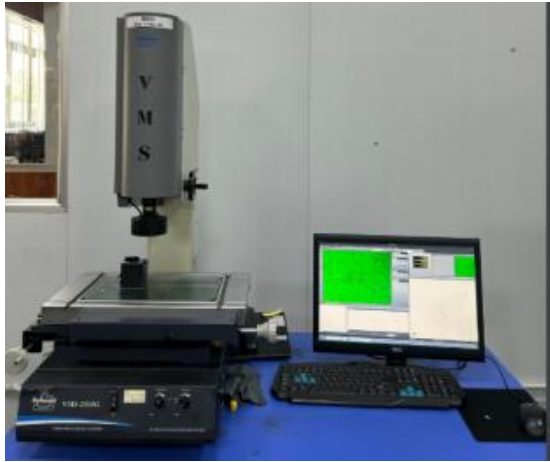
Quality control



Gear Measuring Center	1台
Universal Testing Machine	2台
Precision Densitometer (10,000 points)	2台
Hardness Tester (HRC)	2台
Metallographic Vickers hardness tester (HV)	1台
Two-Dimensional Measuring Instrument	1台
Three-dimensional measuring instrument	1台
Other testing equipment	10台



Quality control



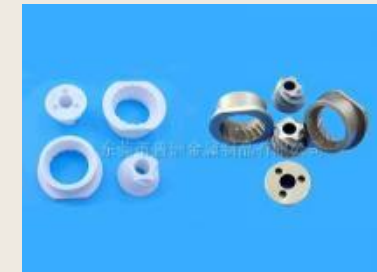
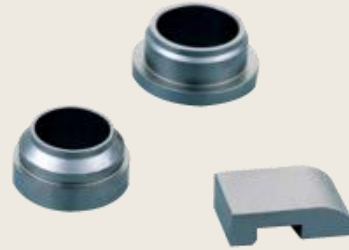
Power tool powder metallurgy spare parts series products



Special-shaped structure powder metallurgy spare parts series



Stainless steel powder metallurgy spare parts series

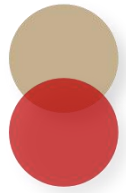


Needle car powder metallurgy spare parts series



Lock powder metallurgy spare parts series





Oil bearing powder metallurgy spare parts series

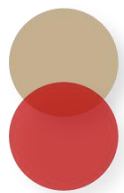


Powder metallurgy gear series

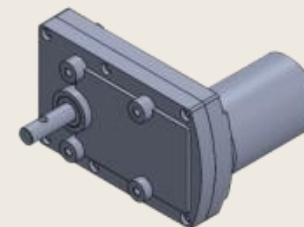
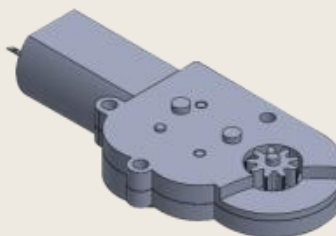
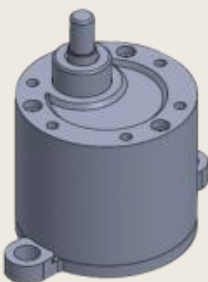
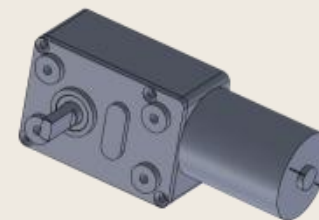
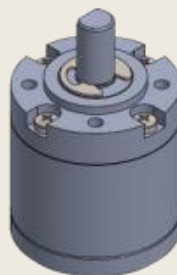
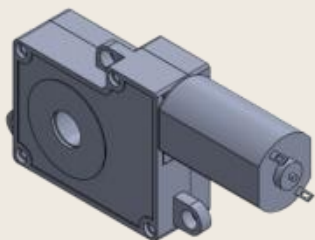


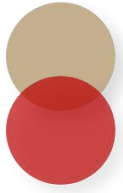
Automotive powder metallurgy parts series





Gearbox series





Partner

brother®NidecCanon

The company adheres to the development strategy of "market-oriented, customer-centered". By strictly controlling product quality and strictly abiding by the spirit of the contract, it has won unanimous recognition from customers in the industry with high quality standards, high execution, and integrity and compliance with contracts, including Japan. Brother Industries, TTI, Nidec Sankyo, Gangjie Industrial, Vietnam Daki, Shilong Daki, Shenzhen Yujing and other well-known domestic and foreign excellent enterprises, and have established long-term partners